

Technical data WL-RO-170 / WL-ROB-170

Volume flow rate permeate [l/h]	170 *
Required raw water volume flow rate [l/h]	approx. 340
Desalination rate [%]	approx. 96 - 98
Yield [%]	approx. 50 *
Inlet pressure of raw water [bar] (minimum/maximum)	2 - 6 **
Discharge pressure of permeate [bar] (via pressure switch)	1 - 3.5
Water installations	¾
Electric connection [V/Hz]	230 / 50
Electric connected load [kW]	0.56
Empty weight [kg]	30
Operating weight [kg]	approx. 48
Height [mm]	1100
Width [mm]	650
Depth [mm]	340

* All performance data is based on a water temperature of 15°C and a total raw water salt content ≤ 750 ppm.
Reducing the raw water temperature lowers the permeate output by 3% per 1°C.
** 1 bar higher than permeate pressure (only for WL-ROB-170)

Subject to technical amendments

Our service for 100% customer satisfaction

- Simple ordering process
- Long availability of replacement parts
- HygroMatik distributes in more than 45 countries
- Operating manuals, planning data and information on workshop events available online at www.airtrend.rs



HygroMATIK
WE HUMIDIFY THE AIR

AIRTREND Limited
Predstavništvo u Beogradu
Kumanovska 14, 11000 Beograd
Tel: 011 383 68 86, 308 57 40
Faks: 011 344 41 13
e-mail: gobrid@eunet.rs
web: www.airtrend.rs

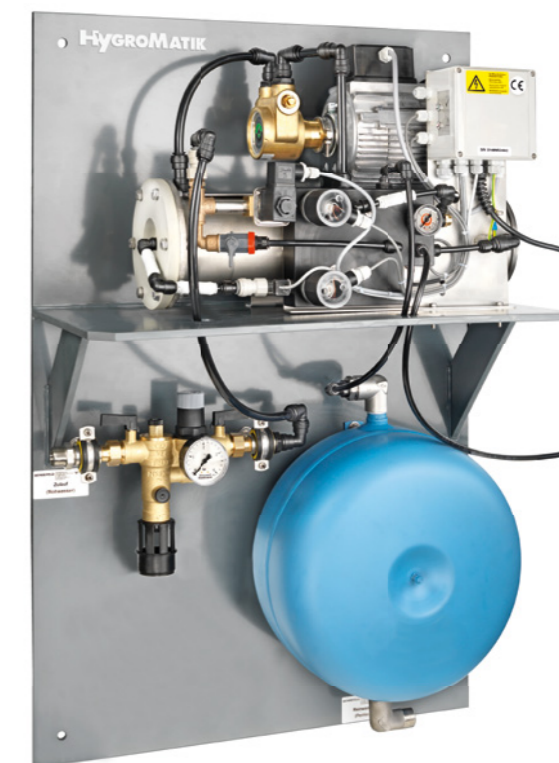
01/2019



HygroMATIK
WE HUMIDIFY THE AIR

WaterLine RO/ROB

Reverse Osmosis Systems



HygroMATIK
MORE THAN
45 YEARS
HUMIDIFICATION



HygroMatik Water Treatment

Reverse osmosis as a practical solution for water treatment

In order to protect the humidifiers from limescale and salt deposits, the use of demineralised or blended water is recommended.

With the WaterLine RO/ROB, HygroMatik offers a practical solution for the supply of humidifiers – **ready to use and of compact size**. The conductivity of the demineralised water can be adjusted according to requirements. Therefore, the demineralised water can be used for both electrode and heater steam humidifiers. Thus, the WaterLine RO/ROB is suitable for all HygroMatik humidifier systems. During the reverse osmosis process, the natural osmosis process is reversed using pressure. The demineralised water created in this process is called permeate. The resulting concentrate contains all impurities from the supplied raw water.

- Easy to install and maintenance friendly reverse osmosis plant
- Space-saving wall mounting
- Backflow preventer for protection against contamination of drinking water according to DIN EN 1717 included
- Up to a total hardness of 25° dH (carbonate hardness of 12° dH, max. permissible salt content 750 ppm) no upstream water softening plant necessary
- Small size – delivery incl. mounting plate
- Simple operation
- Display of operation and service messages
- Ideal for all HygroMatik humidifier systems

The components at a glance

1. Reverse osmosis plant incl. high pressure pump as rotary vane pump, pressure gauge for inlet pressure. Stainless steel pressure pipe, pressure switch for monitoring inlet water pressure (dry run protection)
2. Microprocessor controller with 2 LEDs for the display of operation and service messages
3. System separator type BA with integrated dirt trap, pressure regulator and pressure gauge
4. Membrane pressure tank

Without image

- Sampling tap for water quality testing
- Monitoring of the inlet water pressure, the permeate conductivity and the permeate flow
- Potential-free release
- Potential-free fault signal contact

Only WaterLine ROB

- Bypass valve for maintenance purposes
- Blending device for blending permeate with raw water in order to increase the water conductivity, in particular for electrode steam humidifiers

