

# *Roof Mounted Fans*



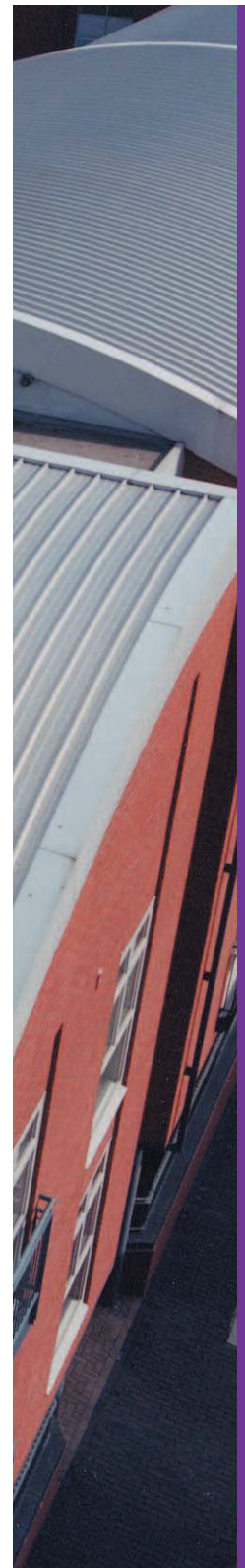
AIRTREND Limited  
Predstavništvo u Beogradu  
Kumanovska 14, 11000 Beograd  
Tel: 011/3836886, 3085740  
Faks: 011/3444113  
e-mail: [gobrid@eunet.rs](mailto:gobrid@eunet.rs)  
web: [www.airtrend.rs](http://www.airtrend.rs)



# Section 6

Wide performance ranges are obtained by using three impeller designs to suit all types of applications.

The roof extract units are designed to satisfy the consultants functional requirement for a direct drive propeller fan unit of guaranteed performance, and the architects aesthetic need for a very low contour glass fibre reinforced cowl.



Section 6 - Roof Mounted Fans





- 200mm - 760mm diameter
- Volume flow up to 9.2m<sup>3</sup>/s
- Static pressures up to 1000 Pa
- Four fan types allowing versatility of performance
- Rugged fibre glass construction casings
- Completely assembled units
- Mounting angle up to 30° slope
- Robustly packed
- Three types of mounting
- Wide range of motor options
- Commonality of appearance
- Full range of accessories available
- Inverter controllable

## Sizes

DSP/DPI: 315, 355, 400, 450, 500, 630, 710mm diameter.  
DSM/DSC: 200, 250, 330, 400, 500, 630 and 760mm diameter.  
Larger sizes are available please enquire for further details.

## Fan Performance

Wide performance ranges are obtained by using 3 impeller designs to suit all types of applications. DPI units for input, volume flow is reduced by 10% compared with corresponding DSP figures and are supplied without anti-backdraught shutters.

## Impellers

DSP/DPI: Impeller is as used in 2101GP fan. Product often used in low pressure applications.  
DSM/DSC: For higher pressure development, purpose designed mixed flow (DSM) and centrifugal (DSC) impellers are available.  
DSI: Roof unit available with JM Aerofoil impeller. Please contact your local Express distributor for further details.

## Motors

All motors are totally enclosed and are rated to class F.  
Most motors are suitable for inverter speed control down to 20% of full speed.

## Electrical Supply

220 - 240V / 50Hz / 1φ  
380 - 420V / 50Hz / 3φ

## Temperature Range

-40°C to 50°C without shutters.  
-20°C to 50°C with shutters.

(All motors are not suitable for starting at temperatures lower than -20°C.)

## Casings

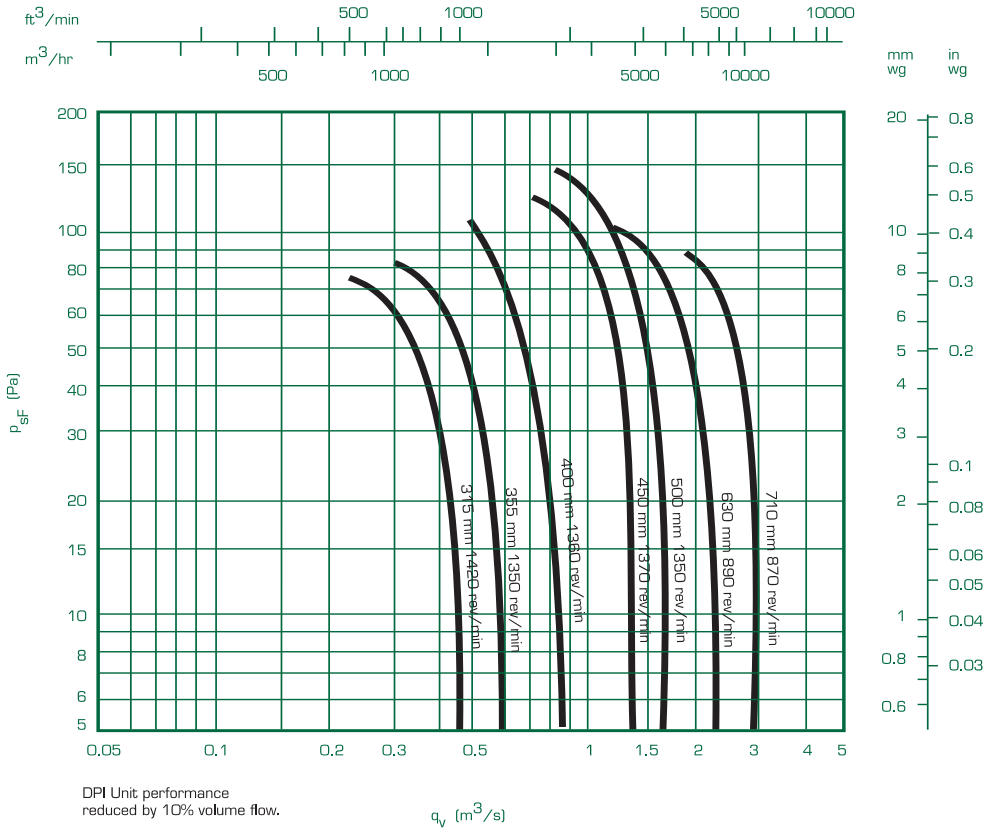
The cowls are manufactured from cold pressed fibre glass which offers long life in the severest weather conditions. The colouring contains an ultra violet stabiliser which ensures the cowls will not fade due to sunlight. Standard colourant: BS 5252 10 A05 (Goose wing grey). The units are fully assembled, and leave our works in sturdy packaging. This allows quick and easy installation on site. Three methods of mounting, curb for a flat roof, purlin for a sloping roof or wall mounting (by using a Fläkt Woods adaptor). Suitable for mounting up to 30° from horizontal.

## Accessories

Bird Guards, Soaker Sheets, Inlet Guards, Purlin Boxes, Acoustic Curbs, Local Isolators, Electronic and transformer type speed controllers and frequency invertors.



## Performance Data



Product Code	Speed rev/min	m <sup>3</sup> /s at Pa (Static)						
		0	25	50	75	100	125	150
DSP/315	1420	0.45	0.41	0.34	0.23			
DSP/355	1350	0.62	0.55	0.46	0.35			
DSP/400	900	0.59	0.45					
DSP/400	1360	0.9	0.8	0.67	0.6	0.48		
DSP/450	870	0.9	0.75	0.45				
DSP/450	1370	1.38	1.29	1.18	1.05	0.9		
DSP/500	880	1.06	0.9	0.7				
DSP/500	1350	1.62	1.55	1.4	1.3	1.18	1.0	0.8
DSP/630	540	1.4	1.1					
DSP/630	650	1.76	1.52	1.15				
DSP/630	890	2.4	2.16	1.9	1.7	1.3		
DSP/710	540	1.7	1.45					
DSP/710	650	2.2	2.02	1.4				
DSP/710	870	3.0	2.81	2.6	2.25			

For larger sizes please enquire.

Express Range	- These products are available from our UK Express Distributor on same day delivery from the date of order.
Standard Service	- Please consult your local distributor for availability maximum 15 days.

## Electrical Data

Product Code	Speed rev/min	Motor	220-240V/50Hz/1 $\phi$							Sound Level dBA
			Product Number	Motor Rating (kW)	Full Load Current (at 230V) (A)	Starting Current (at 230V) (A)	Wiring Diagram Ref	Speed Controller		
								Elec- tronic	Trans- former	
DSP355	1380	BT4	WD222169	0.095	0.8	1.3	CD2405	ME1.1	MT1.1	50
DSP400	900	BT5	WD243164	0.083	0.9	1.2	CD2405	ME1.1	MT1.1	45
DSP400	1360	BT5	WD242168	0.18	1.4	2.2	CD2405	ME1.3	MT1.5	54
DSP450	870	BT5	WD253164	0.083	0.9	1.2	CD2405	ME1.1	MT1.1	48
DSP450	1370	BT9	WD252168	0.32	2.2	5	CD2405	ME1.3	MT1.5	58
DSP500	880	CT5	WD273164	0.19	1.65	2.5	CD2405	N/A	N/A	51
DSP500	1350	CT5	WD272164	0.52	3.9	7.8	CD2405	ME1.6	MT1.5	61
DSP630	560	CT9	WD305164	0.12	1.5	2	CD2405	ME1.3	MT1.5	46
DSP630	700	CT9	WD304165	0.22	2	2.7	CD2405	ME1.3	MT1.5	51
DSP630	920	CT9	WD303166	0.50	3.5	6.3	CD2405	ME1.6	MT1.5	59
DSP710	530	CT9	WD315163	0.12	1.5	2	CD2405	ME1.3	MT1.5	49
DSP710	650	CT9	WD314164	0.22	2	2.7	CD2405	ME1.3	MT1.5	55
DSP710	875	CT9	WD313166	0.54	4	7.8	CD2405	ME1.6	MT1.8	62

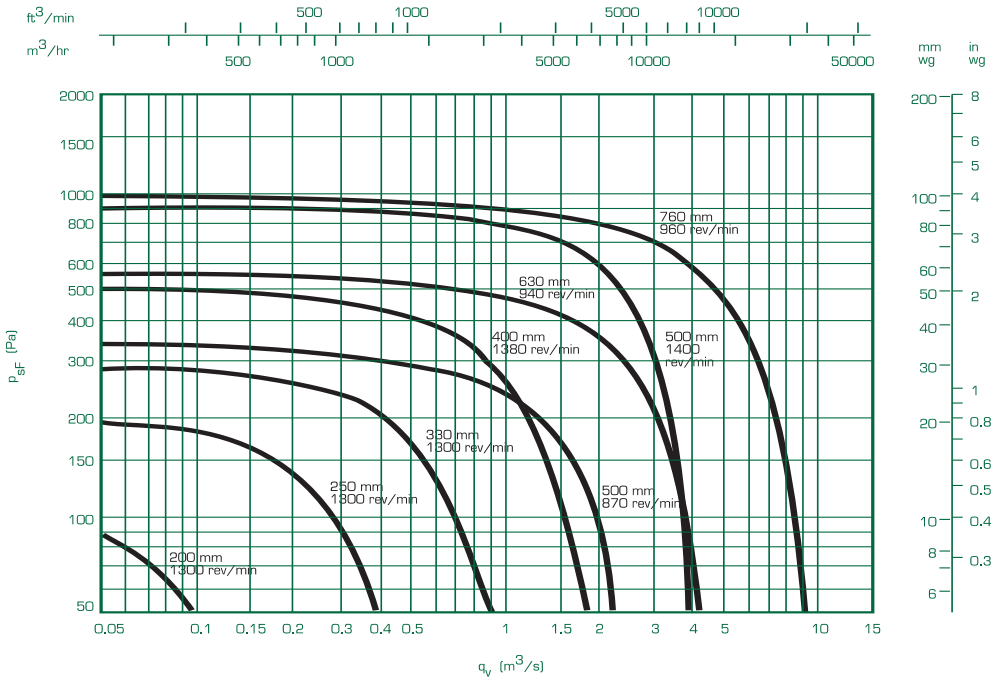
Product Code	Speed rev/min	Motor	380-420/50Hz/3 $\phi$							Sound Level dBA	
			Product Number	Motor Rating (kW)	Full Load Current (at 400V) (A)	Starting Current (at 400V) (A)	Wiring Diagram Ref	Speed Controller			
								Elec- tronic	Trans- former		Inverter
DSP315	1380	BT4	WD212366	0.087	0.35	1.12	CD2408	ME3.2D	MT3.0.5	FWD1	48
DSP355	1380	BT4	WD222366	0.1	0.36	1	CD2410	ME3.5S	MT3.0.5	FWD1	50
DSP400	1360	BT5	WD242367	0.18	0.63	1.85	CD2410	ME3.5S	MT3.1	FWD1	54
DSP400	900	BT5	WD243364	0.055	0.28	0.56	CD2410	ME3.2D	MT3.0.5	FWD1	45
DSP450	870	BT5	WD253364	0.075	0.44	0.77	CD2410	ME3.2D	MT3.0.5	FWD1	48
DSP450	1380	BT9	WD252368	0.29	0.97	3	CD2410	ME3.2D	MT3.1	FWD1	58
DSP500	900	CT5	WD273364	0.14	0.62	1.8	CD1344	ME3.2D	MT3.1	FWD1	51
DSP500	1360	CT5	WD272367	0.66	1.9	6.4	CD2410	N/A	N/A	FWD1	61
DSP630	560	BT9	WD305364	0.12	0.62	1.3	CD2410	ME3.2D	MT3.2	FWD1	46
DSP630	700	CT9	WD304365	0.3	1.05	2.8	CD2410	N/A	N/A	FWD1	51
DSP630	920	CT9	WD303369	0.57	2.2	4.9	CD2410	N/A	N/A	FWD1	59
DSP710	530	CT9	WD315364	0.12	0.62	1.3	CD2410	ME3.2D	MT3.2	FWD1	49
DSP710	670	CT9	WD314362	0.30	1.05	2.8	CD2410	N/A	N/A	FWD1	55
DSP710	875	CT9	WD313364	0.68	2	5.7	CD2410	N/A	N/A	FWD1	62

Sound pressure levels quoted are average dBA at 3m distance over a sphere, under free field conditions and are presented for comparative purposes only.

For drawings and dimensions see section 6.4, accessories see section 6.8 and wiring diagram references can be found in section 9.2.

Please refer to our Fläkt Woods inverter & speed control warranty clause on page 226.

## Performance Data



Product Code	Speed rev/min	m <sup>3</sup> /s at Pa (Static)							
		0	50	125	200	250	375	500	750
DSM/200	1300	0.22	0.10						
DSM/250	860	0.35	0.17						
DSM/250	1300	0.53	0.4	0.22					
DSM/330	880	0.7	0.49						
DSM/330	1300	1.05	0.9	0.67	0.4	0.21			
DSM/400	1380	1.8	1.65	1.45	1.2	1.05	0.6		
DSM/500	680	1.9	1.7	1.0					
DSM/500	870	2.5	2.3	1.8	1.3	0.9			
DSM/500	1400	4.1	3.9	3.7	3.5	3.3	2.9	2.4	1.2
DSM/630	700	3.4	3.0	2.3	1.4	0.8			
DSM/630	940	4.6	4.25	3.8	3.2	2.8	1.8	0.7	
DSM/760	710	6.9	6.3	5.5	4.5	3.9	2.2		
DSM/760	960	9.2	8.9	8.3	7.8	7.2	6.1	5.0	2.5

**Express Range** - These products are available from our UK Express Distributor on same day delivery from the date of order.

**Standard Service** - Please consult your local distributor for availability maximum 15 days.



## Electrical Data

Product Code	Speed rev/min	Motor	220-240V/50Hz/1 $\phi$							Sound Level dBA
			Product Number	Motor Rating (kW)	Full Load Current (at 230V) (A)	Starting Current (at 230V) (A)	Wiring Diagram Ref	Speed Controller		
								Elec- tronic	Trans- former	
DSM200	1300	BT4	WE162163	0.055	0.41	0.81	CD2405	N/A	N/A	44
DSM250	860	BT4	WE183163	0.034	0.31	0.47	CD2405	ME1.1	MT1.1	39
DSM250	1300	BT4	DE182163	0.095	0.8	1.3	CD2405	ME1.1	MT1.1	50
DSM330	880	BT5	WE233163	0.083	0.9	1.2	CD2405	ME1.1	MT1.1	46
DSM330	1300	BT5	DE232163	0.21	1.85	2.3	CD2405	N/A	N/A	57
DSM400	1380	CT5	DE242164	0.52	3.9	7.8	CD2405	ME1.6	MT1.5	61
DSM500	680	CT9	WE274163	0.22	2	2.7	CD2405	ME1.3	MT1.5	53
DSM500	870	CT9	WE273164	0.54	3.8	6.8	CD2405	ME1.6	MT1.8	58
DSM500	1400	F22	WE272164	2.3	12.3	48	CD2405	N/A	MT1.12	71

Product Code	Speed rev/min	Motor	380-420/50Hz/3 $\phi$									Sound Level dBA
			Product Number	Motor Rating (kW)	Full Load Current (at 400V) (A)	Starting Current (at 400V) (A)	Wiring Diagram Ref	Speed Controller				
								Elec- tronic	Trans- former	Inverter		
DSM250	860	BT4	WE183362	0.035	0.18	0.35	CD2408	ME3.5S	MT3.0.5	FWD1	39	
DSM250	1300	BT4	WE182362	0.13	0.50	1.15	CD2408	ME3.5S	MT3.0.5	FWD1	50	
DSM330	880	BT9	WE233363	0.14	0.65	1.45	CD2408	ME3.2D	MT3.1	FWD1	46	
DSM330	1300	BT9	WE232363	0.39	1.26	3.9	CD2407	N/A	N/A	FWD1	57	
DSM400	1380	CT5	WE242364	0.66	1.9	6.4	CD2408	N/A	N/A	FWD1	61	
DSM500	680	CT9	WE274363	0.30	1.05	2.80	CD2408	N/A	N/A	FWD1	52	
DSM500	870	CT9	WE273363	0.68	2.0	5.7	CD2408	ME3.2D	MT3.2	FWD1	58	
DSM500	1400	F22	WE272364	2.7	5.77	30	CD2385	N/A	N/A	FWD3	71	
DSM630	690	F22	WE304363	0.8	3.05	11	CD2385	N/A	N/A	FWD1	60	
DSM630	920	F22	WE303362	2.5	6.42	26	CD2385	N/A	N/A	FWD3	67	
DSM760	710	D132M	WE324365	3.6	8.1	41.5	CD1343	N/A	N/A	FWD4	67	
DSM760	960	D132M	WE323365	6.6	14.3	78.7	CD1343	N/A	N/A	FWD6	76	

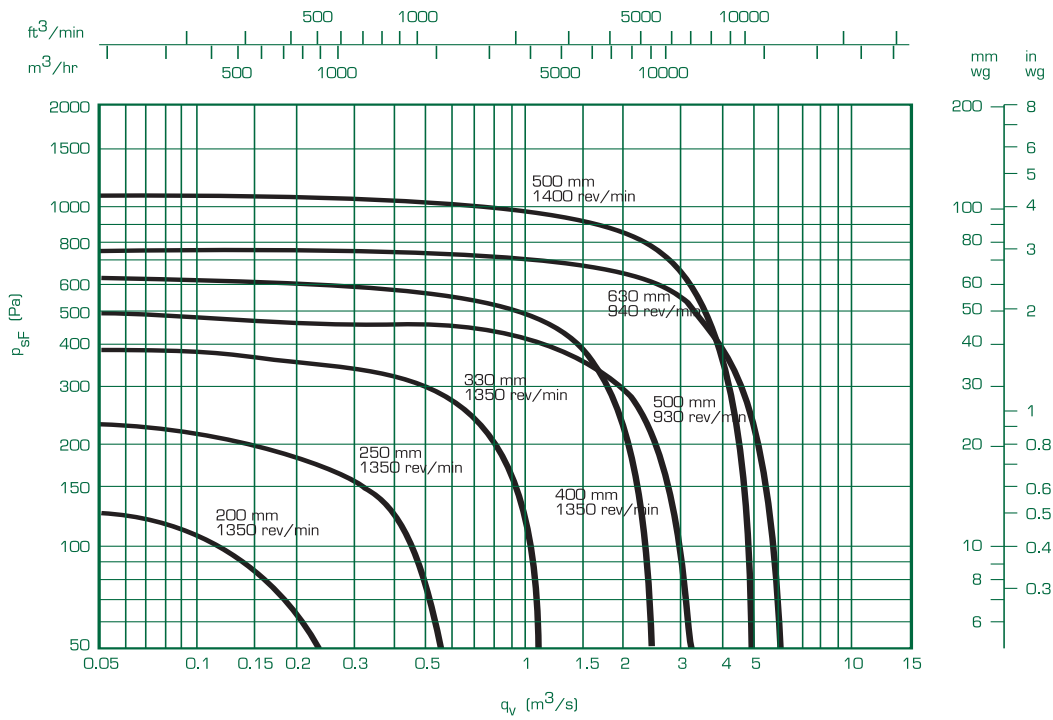
Sound pressure levels quoted are average dBA at 3m distance over a sphere, under free field conditions and are presented for comparative purposes only.

For drawings and dimensions see section 6.4, accessories see section 6.8 and wiring diagram references can be found in section 9.2.

Please refer to our Fläkt Woods inverter & speed control warranty clause on page 226.



## Performance Data



Product Code	Speed rev/min	m³/s at Pa (Static)						
		0	50	125	200	250	500	750
DSC/200	900	0.21	0.06					
DSC/200	1350	0.32	0.22	0.053				
DSC/250	900	0.44	0.25					
DSC/250	1350	0.66	0.55	0.38	0.15			
DSC/330	900	0.85	0.67	0.33				
DSC/330	1350	1.3	1.19	1.0	0.8	0.6		
DSC/400	660	1.2	0.9	0.4				
DSC/400	900	1.62	1.43	1.15	0.75			
DSC/400	1350	2.5	2.4	2.2	2.0	1.85	1.0	
DSC/500	700	2.5	2.2	1.5	1.0	0.3		
DSC/500	930	3.3	3.1	2.8	2.3	2.0		
DSC/500	1400	5.1	5.0	4.7	4.5	4.3	3.5	2.5
DSC/630	700	4.9	4.5	3.9	3.2	2.7		
DSC/630	940	6.6	6.3	5.9	5.5	5.2	3.3	

For larger sizes please enquire.

Express Range	- These products are available from our UK Express Distributor on same day delivery from the date of order.
Standard Service	- Please consult your local distributor for availability maximum 15 days.



# Roof Extract Units - DSC

# Section 6.3

## Electrical Data

Product Code	Speed rev/min	Motor	220-240V/50Hz/1 $\phi$							Sound Level dBA
			Product Number	Motor Rating (kW)	Full Load Current (at 230V) (A)	Starting Current (at 230V) (A)	Wiring Diagram Ref	Speed Controller		
								Elec- tronic	Trans- former	
DSC200	900	BT4	WL163163	0.02	0.26	0.48	CD2405	N/A	N/A	36
DSC200	1350	BT4	WL162163	0.055	0.41	0.81	CD2405	N/A	N/A	45
DSC250	900	BT5	WL183163	0.04	0.38	0.59	CD2405	ME1.1	MT1.1	42
DSC250	1350	BT5	DL182163	0.16	2.70	4.5	CD2405	N/A	N/A	TBA
DSC330	900	BT9	WL233163	0.14	1.35	2.2	CD2405	ME1.3	MT1.5	47
DSC330	1350	CT5	DL232163	0.45	4.2	6	CD2405	ME1.6	MT1.5	58
DSC400	660	CT9	WL244163	0.16	1.5	2	CD2405	ME1.3	MT1.5	46
DSC400	900	CT9	WL243163	0.43	3	7.1	CD2405	ME1.6	MT1.8	54
DSC400	1350	CT9	DL242163	1.2	7.8	18.7	CD2405	ME1.12	MT1.8	64
DSC500	700	F22	WL274164	0.6	5.1	11	CD2386	ME1.6	MT1.8	52
DSC500	930	F22	WL273164	1.4	9.42	25	CD2386	ME1.12	MT1.12	60

Product Code	Speed rev/min	Motor	380-420/50Hz/3 $\phi$									Sound Level dBA
			Product Number	Motor Rating (kW)	Full Load Current (at 400V) (A)	Starting Current (at 400V) (A)	Wiring Diagram Ref	Speed Controller				
								Elec- tronic	Trans- former	Inverter		
DSC250	900	BT5	WL183363	0.055	0.28	0.56	CD1646	ME3.2D	MT3.0.5	FWD1	42	
DSC250	1350	BT5	WL182363	0.18	0.63	1.85	CD2408	ME3.5S	MT3.1	FWD1	53	
DSC330	900	BT9	WL233363	0.14	0.65	1.45	CD2408	ME3.2D	MT3.1	FWD1	47	
DSC330	1350	CT5	WL232364	0.54	1.8	4.90	CD2410	ME3.2D	MT3.2	FWD1	60	
DSC400	660	CT9	WL244363	0.20	1	1.95	CD2410	ME3.2D	MT3.2	FWD1	46	
DSC400	900	CT9	WL243363	0.49	1.6	4.7	CD2408	ME3.5S	MT3.2	FWD1	54	
DSC400	1350	CT9	WL242363	1.15	3.2	11	CD2408	ME3.2D	AT7.0	FWD1	64	
DSC500	700	F22	WL274364	0.60	2.36	8	CD1559	N/A	N/A	FWD1	53	
DSC500	930	F22	WL273364	1.35	3.40	15	CD1559	N/A	N/A	FWD2	60	
DSC500	1400	PM1.12	WL272364	4.4	9.33	55	CD1343	N/A	N/A	FWD4	72	
DSC630	700	D132M	WL304365	3.6	8.1	41.5	CD1343	N/A	N/A	FWD4	63	
DSC630	940	D132M	WL303365	4.8	10.4	52	CD1343	N/A	N/A	FWD5	70	

Sound pressure levels quoted are average dBA at 3m distance over a sphere, under free field conditions and are presented for comparative purposes only.

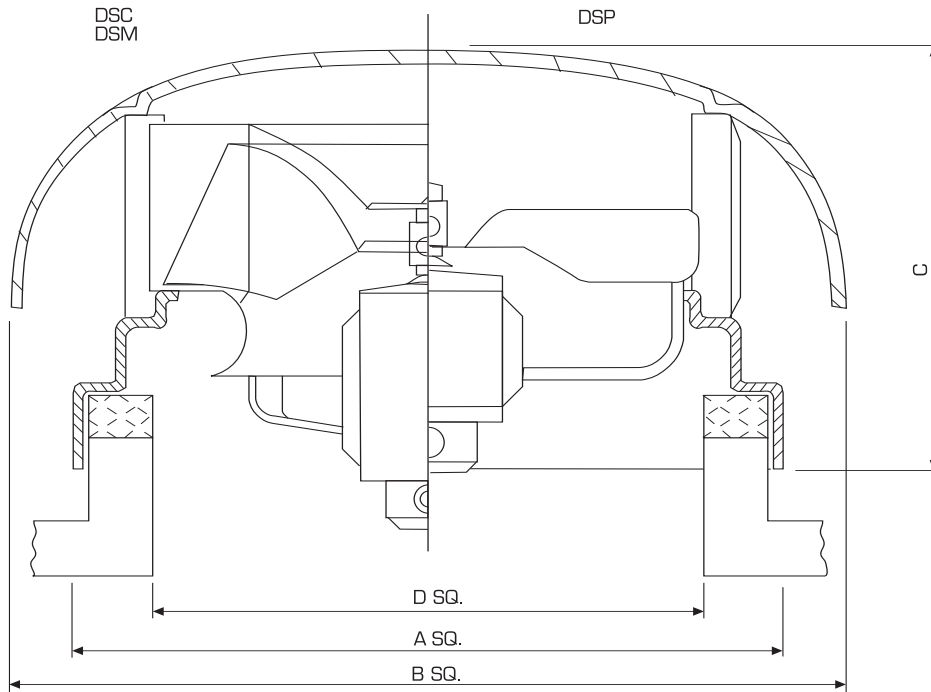
For drawings and dimensions see section 6.4, accessories see section 6.8 and wiring diagram references can be found in section 9.2.

Please refer to our Fläkt Woods inverter & speed control warranty clause on page 226.

# Roof Extract Units

# Section 6.4

## Dimensions



Product Code	Motor	DSC				Weight (kg)
		A	B	C	D	
DSC200	BT4	450	480	280	250	16
DSC250	BT5	525	600	310	325	22
DSC330	BT5	600	710	355	400	25
DSC330	BT9	600	710	355	400	27
DSC330	CT5	600	710	355	400	28
DSC400	CT9	700	820	400	500	35
DSC500	F22	900	1030	475	700	67
DSC500	PM112	900	1030	475	700	80
DSC630	D132	1050	1300	550	800	109

Product Code	Motor	DSM				Weight (kg)
		A	B	C	D	
DSM200	BT4	450	480	280	250	15
DSM250	BT5	525	600	310	325	22
DSM250	BT4	525	600	310	325	20
DSM330	BT5	600	710	355	400	24
DSM400	BT9	700	820	400	500	32
DSM400	CT5	700	820	400	500	33
DSM500	CT9	900	1030	475	700	58
DSM500	F22	900	1030	475	700	64
DSM630	F22	1050	1300	550	800	75
DSM630	PM112	1050	1300	550	800	85
DSM760	D132	1250	1700	710	1000	129

Product Code	Motor	DSP				Weight (kg)
		A	B	C	D	
DSP315	BT4	525	600	310	325	16
DSP355	BT4	525	600	310	325	18
DSP400	BT5	600	710	355	400	20
DSP450	BT5	700	820	400	500	25
DSP450	BT9	700	820	400	500	27
DSP500	CT5	700	820	400	500	29
DSP630	CT9	900	1030	475	700	46
DSP710	CT9	1050	1300	550	800	50

All dimensions shown in mm.

Express Range	-	These products are available from our UK Express Distributor on same day delivery from the date of order.
Standard Service	-	Please consult your local distributor for availability maximum 15 days.





**Section 6 - Roof Extract Units**

## DVP - Specification

The type DVP roof extract unit is designed to satisfy the consultants functional requirement for a direct drive propeller fan unit of guaranteed performance, and the architects aesthetic need for a very low contour glass fibre reinforced cowl.

The fan is of Fläkt Woods 2101 GP series powered by a metric motor giving high efficiency in terms of airflow per Watt and consequent low running costs. The impeller is designed to give maximum volume at minimum noise level for minimum power consumption.

### Performance and Sizes

The range comprises eight sizes with fan inlet diameters from 355 to 1000mm and air volume flows of up to 9.2m<sup>3</sup>/s.

All units are available for curb or purlin mounting. Isolators, bird guards, burglar bars, motorised dampers, pre-fabricated curbs and soaker sheets are available as optional extras.

### Motors

Most motors have excellent speed control characteristics and can be regulated down to 20-30% of full speed. Two speed motors are available. Motors are rated for continuous running in ambient temperatures of up to 50°C (122°F).

DVP units are despatched completely assembled and packed.

### Impellers

Fan diameters 355-710 mm are of aluminium clad steel. Fan diameters 800-1000 mm are of hot dipped galvanised steel blade with aluminium hub.

Balanced to BS6861 Part 1 (ISO 1940, 1986) grade G6.3. Corrosion resistant and suitable for continuous outside use.



---

## DVM - Specification

The type DVM roof extract unit combines the technical advantages of Fläkt Woods mixed flow impeller with a low contour vertical discharge cowl.

The design provides the consultant /contractor with a high efficiency unit where it is required to discharge the extracted air at high velocity away from roof level.

The wind shield and base are moulded in fire retardant glass fibre reinforced resin which provides excellent resistance to atmospheric corrosion.

### Performance and Sizes

The range comprises of six fan sizes from 250 to 760mm and air volumes up to 8.3m<sup>3</sup>/s.

The unit is designed to give excellent performance characteristics with high volume flow and stable pressure development without stall. The fan is of Fläkt Woods mixed flow series powered by a metric motor giving high efficiency in terms of air flow per Watt and consequent low running costs.

All units are available for curb or purlin mounting.

Isolators, bird guards, burglar bars, motorised dampers, pre-fabricated curbs and soaker sheets are available as optional extras.

### Motors

Motors are rated for continuous running in ambient temperatures of up to 50°C (122°F).

DVM units are despatched completely assembled and packed.

### Impellers

The impeller is aluminium and of Fläkt Woods patented mixed flow design.

## DVC - Specification

The type DVC roof extract unit provides the consultant/contractor and user with a high efficiency unit where it is required to discharge the extracted air at high velocity away from roof level. It employs a compact, direct driven centrifugal fan with a guaranteed performance for extract systems with a significant static pressure requirement.

The wind shield and base are moulded in fire retardant glass fibre reinforced resin which provides excellent resistance to atmospheric corrosion.

## Performance and Sizes

The range comprises of six fan sizes from 250 to 760mm and air volumes up to 9.7m<sup>3</sup>/s.

All units are available for curb or purlin mounting.

Isolators bird guards, burglar bars, motorised dampers, pre-fabricated curbs and soaker sheets are available as optional extras.

## Motors

Motors are rated for continuous running in ambient temperatures of up to 50°C (122°F).

DVC units are despatched completely assembled and packed.

## Impellers

High efficiency, backward curved centrifugal, designed by Fläkt Woods specifically for applications in this range of roof extract units.





## Introduction

Fläkt Woods Wall Units represent another part of the flexibility and family concept of the Colchester Roof Unit Range.

The DSP, DSM, DSC units are readily converted to the wall mounted WDP, WDM, WDC by means of a wall adaptor and louver shutters. Performance data may be taken from page 170 (DSP), 173 (DSM), and 175 (DSC).

The adaptor has been load tested to ensure a generous structural factor of safety enabling it to withstand all normally encountered weather conditions.

The wall unit is secured to the adaptor by stainless steel screws.

## Specification

### Wall Adaptor

The adaptor is moulded in ultra violet stabilised polyester resin, glass reinforced, rendered fire retardant to BS.476: Part 7.

Colourant to BS.4800:08B-21 is built in.

## Shutters

An attractive unit with rigid PVC vanes and aluminium frame. Operated by fan pressure, shutters are enclosed when fan stops. These replace the roof unit shutters.

Fan performance loss is small but varies with fan type, size and duty pressure.

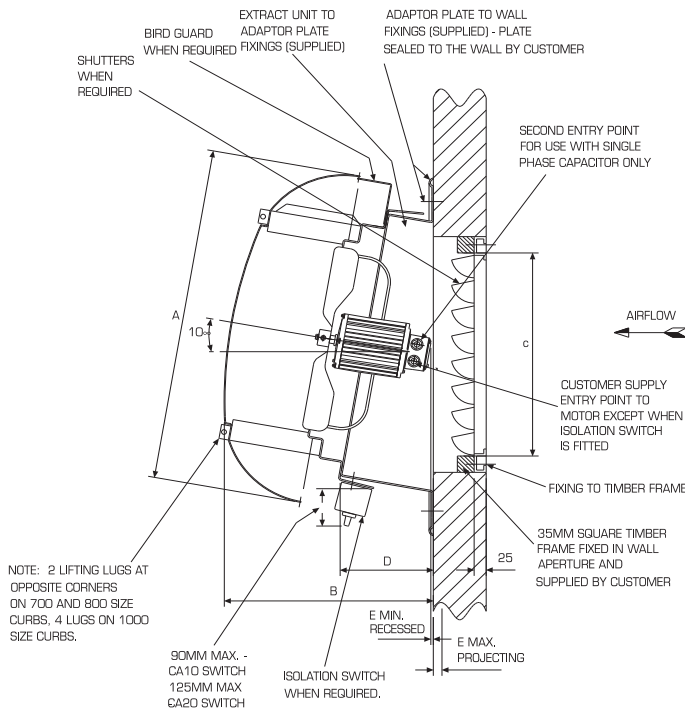
Shutters should only be used with the two higher fan speeds in each size.

## Performance Data

Wall Unit	Max. Volume m <sup>3</sup> / s	Max. Static Pressure Pa
WDP	1.65	140
WDM	1.80	400
WDC	2.5	500

## Drawing and Dimensions

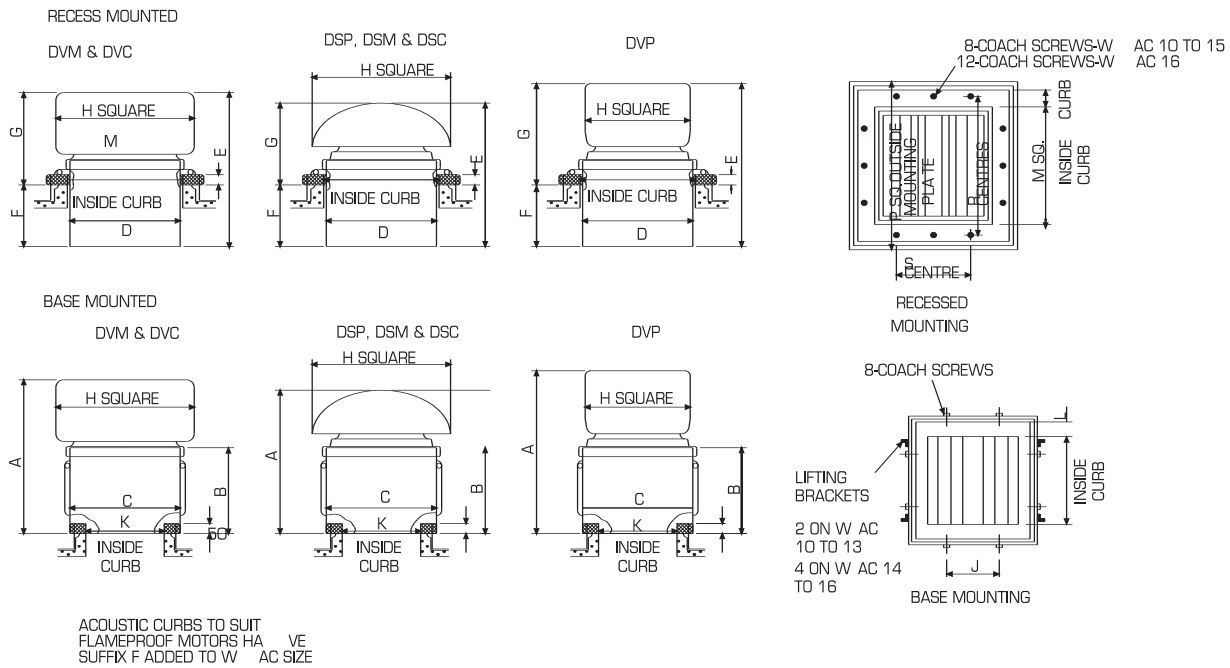
Fan Size	A	B	C	D	E	G	H	J	Weight (Wall Adaptor) kg
WDP 250, WDM 200, WDC 200	480	347	285	168	45	270	600	355	2.4
WDP315/355, WDM 250, WDC 250	600	383	385	181	22	310	670	455	2.8
WDP 400, WDM 330, WDC 330	710	435	435	194	18	350	750	505	3.4
WDP 450/500, WDM 400, WDC 400	820	495	535	212	0	400	850	605	4.0



# Roof Extract Units - Acoustic Curbs

# Section 6.7

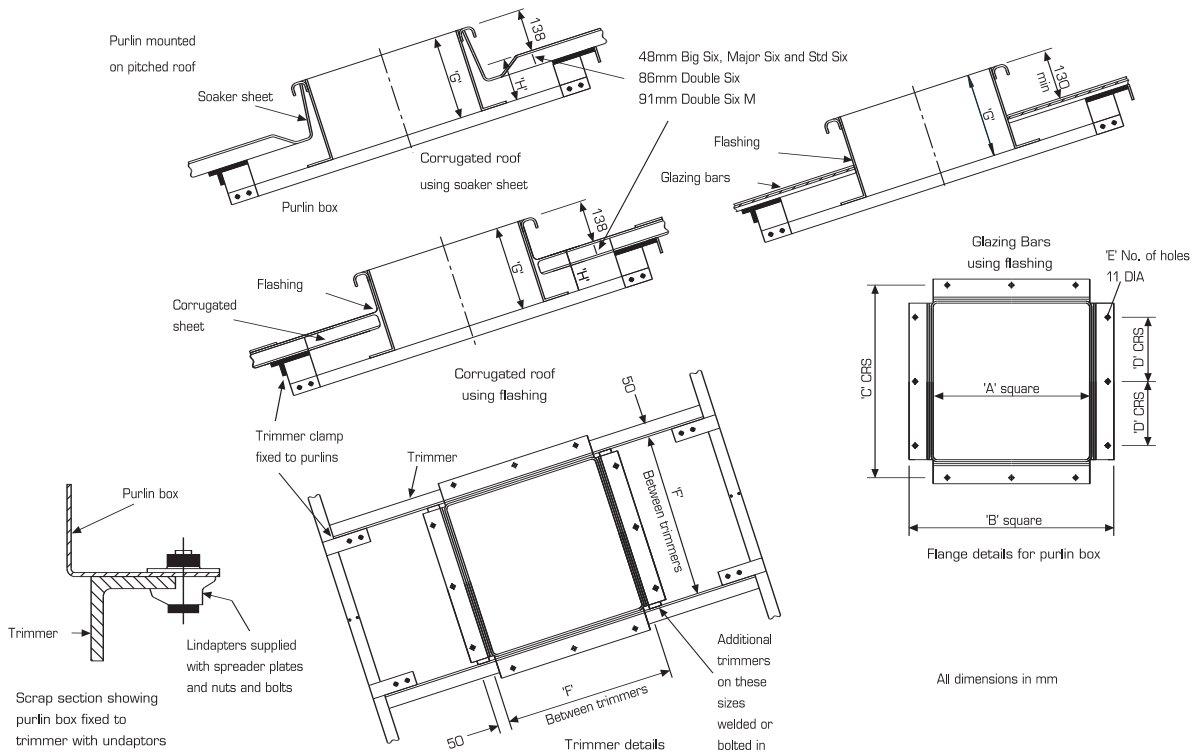
## Dimensions and Weights



	WAC10	WAC11			WAC12			WAC13			WAC14			WAC15			WAC16		
<b>Dim</b>	DSP 250 DSM 200 DSC 200	DSP 315/ 355 DSM 250 DSC 250			DSP 400 DSM 330 DSC 330			DSP 450/ 500 DSM 400 DSC 400			DSP 630 DSM 500 DSC 500			DSP 710/ 800 DSM 630 DSC 630			DSP 1000 DSM 760 DSC 760		
A	708	813	875	918	888	953	993	943	1023	1073	1053	1143	1208	1228	1348	1428	1478	1558	1648
B	500	575			605			615			650			750			840		
C	420	495			570			670			870			1020			1220		
D	420	495			570			670			870			1020			1220		
E	708	813	875	918	888	953	993	943	1023	1073	1053	1143	1208	1228	1348	1428	1478	1558	1648
F	Max 330 Min 50	405 55			435 85			446 96			480 60			580 90			670 110		
G	Max 658 Min 378	758	820	863	803	868	908	847	927	977	993	1083	1148	1138	1258	1338	1368	1448	1538
H	480	600	600	470	710	710	530	820	820	630	1030	1030	780	1300	1260	950	1700	1560	1180
J	150	200			250			350			550			650			850		
K	250	325			400			500			700			800			1000		
L	75	75			75			75			75			100			100		
M	500	600			600			700			900			1200			1500		
N	75	75			75			75			100			100			100		
P	684	784			784			884			1140			1440			1740		
R	575	675			675			775			1000			1300			1600		
S	260	320			320			360			450			800			980		
Weights	18kg	25kg			31kg			37kg			55kg			74kg			109kg		
Curb Weights recess	25kg	33kg			38kg			37kg			70kg			100kg			147kg		

All dimensions show in mm.

## Dimensions and Weights



DSP	DVP DSC	DSM	DVM	DVC	A	B	C	D	E	F	G	H
250		200			345	520	475	250	8	360	272	134
315												
355	355											
400	400	330	330	330	495	670	625	200	12	510	272	134
450	450											
500	500											
630	630	500	500	500	792	970	925	230	16	810	322	184
710	710											
800	800											
1000	1000	760	760	760	1140	1320	1275	250	20	1160	352	214

### Anti-backdraught shutters

Shutters are of aluminium and are an optional extra. Synthetic rubber buffers are provided to ensure quiet operation. Use of shutters does not reduce fan unit performance, but will improve weathering under extreme conditions.

### Inlet Guard

A flat square wire guard can be supplied to close off the opening in a ceiling slab. See unit drawing. Fixings not supplied.

### Bird Guards

Guards can be provided to prevent entry of birds via air discharge openings. Fixings supplied.

### Burglar Bars

Robustly manufactured in steel, with double row of steel bars for extra security.

### Motorised Dampers

To meet requirements where heat loss is critical - motorised dampers mount into the ceiling opening.

Manufactured in aluminium with opposed multileaf blades, supplied complete with motor.

### Prefabricated Metal Upstand

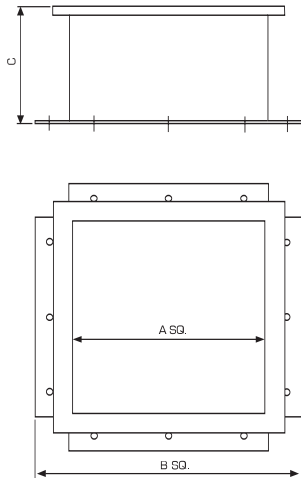
Where it is not convenient to form a timber or concrete upstand, Flakt Woods can provide a preformed pre-galvanised steel curb.



## Roof Extract Units - Accessories

## Section 6.8

### Purlin Box – Roof Extract Units

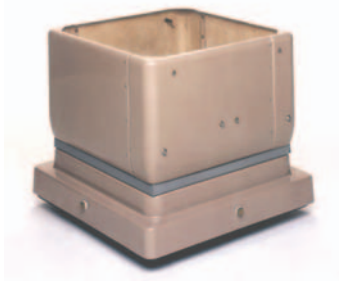


Product Code DSJ	Product Number DSJ	Product Code DSP	Product Number DSP	Product Code DSM/DSC	Product Number DSM/DSC	A	B	C	Weight (kg)
		250	AS16266	200		345	520	272	7.2
315	DA502969	315/355	AS16266	250	DA502969	420	595	272	8.8
355/400	DA502970	400	AS16267	330	DA502970	495	670	272	10.3
450/500	DA502971	450/500	AS16268	400	DA502971	595	770	302	16.2
		630	AS16269	500		792	970	322	22.6
		710/800	AS16270	630		942	1120	342	34.5
		1000		760		1140	1320	352	42.7

## Roof Extract Units - Other Units

## Section 6.9

### High Temperature Units



#### Fan Type - DVA

- Vertical discharge
- 4 Unit Sizes up to 500mm to 1000mm
- Volume Flow up to 10m<sup>3</sup>/s
- Air Pressure up to 500 Pa available
- Incorporating Fläkt Woods H.T. Aerofoil Fans

### Roof Input Units

#### Fan Type - ASP Input Units

- Three alternatives
- Part assembled for easy installation
- For flat or pitched roof
- Fresh Air Input
- Recirculation for heat recovery
- Filtration
- Heating
- Adjustable air distribution

### Fan Type - MF-TAF Input Units

- Mixed Flow Roof Input Unit
- Units suitable for flat roof or sloping roof
- Bird guards are fitted as standard
- Filters can be disposable synthetic fibre or glass fibre, washable foam, 25mm or 50mm thickness
- Units available without fans.
- Available for wall mounting

### Fan Type - DPI

- 2101 GP fan powered roof input unit
- Suitable for curb or purlin mounting
- Basic fan details as DSP unit (Less Shutters)
- Performance offered is 90% of DSP volume flow

### Fan Type - DMI

- Mixed Flow roof input unit
- Suitable for curb or purlin mounting
- Basic fan details as DSM unit (Less Shutters)
- Available in 3 sizes, 500, 700 and 1000mm only



For further details please contact your Express Distributor

